



PACP
PORTUGUESE AMERICAN CITIZENSHIP PROJECT

A NON-PARTISAN INITIATIVE TO PROMOTE CITIZENSHIP AND CIVIC INVOLVEMENT

**OUR LADY OF THE ASSUMPTION PARISH
TURLOCK, CA**

**EVALUATION
OF
THE 2012 ELECTIONS**

**PREPARED
APRIL 30, 2013**

Supported by Luso-American Foundation
Government of the Autonomous Region of the Azores
Business and Community Leaders in the Portuguese American Community

REPORT CONTENTS

Statistics and Summary of Work	2
Results	2
Results Graphs	3
Voter Turnout Summary	3
Voter Turnout by Age	5
Voter Turnout – 2008 vs. 2012 Presidential Elections	8
Appendices	10
Registered Voters by Age and Party	11
Voter Turnout by Party (Merced)	13
Voter Turnout by Gender and Party (Stanislaus)	14
Voter Turnout by Age and Voting Method	15
Registered vs. Actual Voters	18
Voted in both 2008 and 2012 Presidential Elections	19
Voted in all last three elections	19

Key Statistics – 2012

Voter turnout data received from Merced County February 26, 2013 and from Stanislaus County March 7, 2013.

Our Lady of the Assumption (*Merced and Stanislaus Counties in italics*)

➤ OLA All Registered Voters:	906 (322,723)
Registered Voters in Stanislaus County:	590 (222,947)
Registered Voters in Merced County:	316 (98,248)
Our Lady of the Assumption Voter Turnout	
➤ June 2012:	
Stanislaus County Voters:	32.5% (30.6%)
Merced County Voters:	15.8% (25.3%)
All OLA Voters (<i>Stanislaus + Merced Counties</i>)	26.7% (30.1%)
➤ November 2012:	
Stanislaus County Voters:	74.4% (67.5%)
Merced County Voters:	60.8% (63.0%)
All OLA Voters (<i>Stanislaus + Merced Counties</i>)	69.6% (65.8%)

Summary of Work

Our Lady of the Assumption Parish has been an active participant in the Portuguese American Citizenship Project since late 2002. Members of Our Lady of the Assumption Parish reside in Merced and Stanislaus Counties.

Postcards in Portuguese and English were sent out to every household of the Our Lady of the Assumption Parish where at least one registered voter resided reminding them to vote in the November election. These postcards contained the date and polling hours of each election.

Results

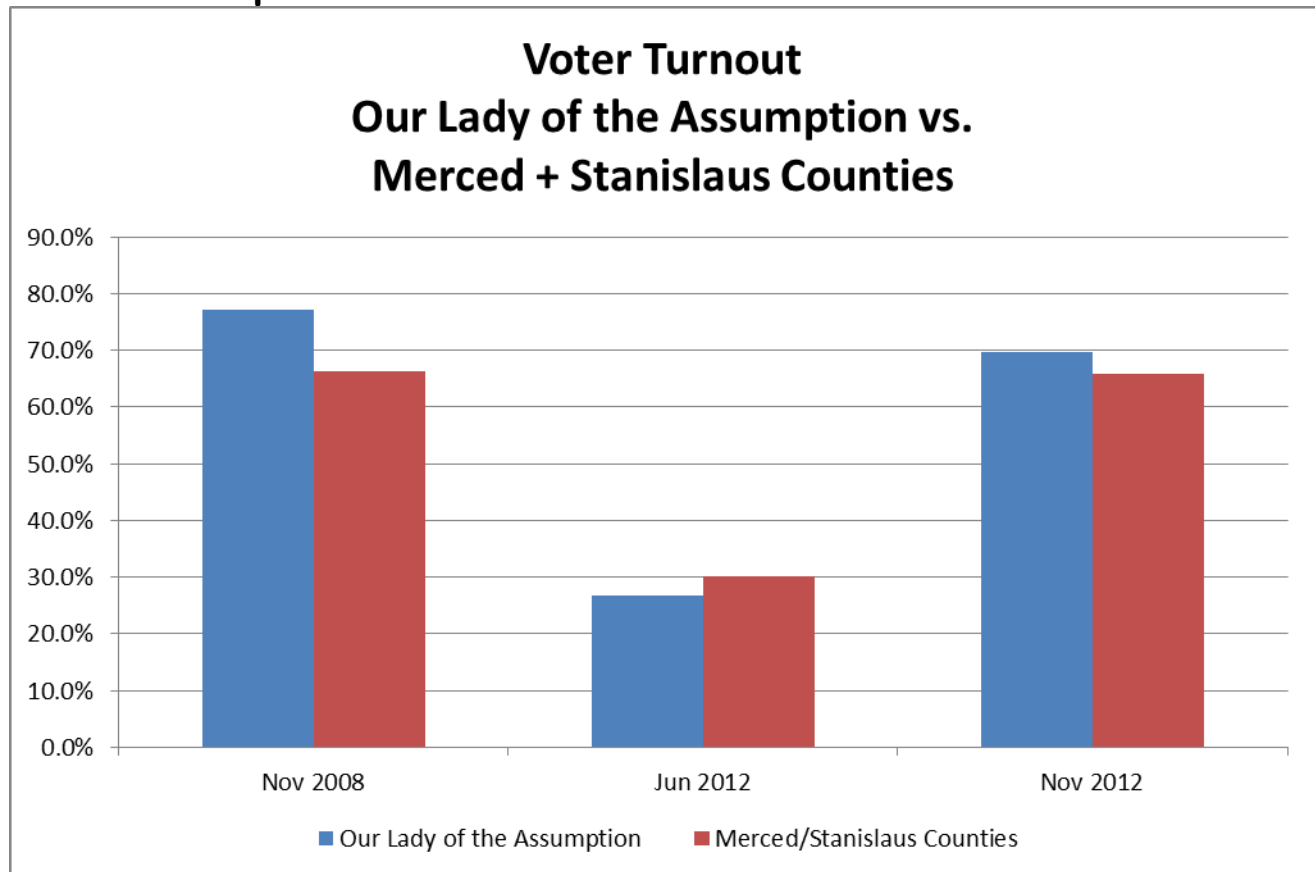
Election results were analyzed separately for Stanislaus and Merced county residents, as well as for the Parish as a whole. Overall voter turnout for Our Lady of the Assumption was lower than Stanislaus + Merced Counties for the June election but higher in November. The Our Lady of the Assumption turnout for the June Election was 26.7%, as compared to the county wide turnout of 30.1%. The Our Lady of the

Assumption turnout for the November Presidential Elections was 69.6%, compared with the county wide turnout of 65.8%.

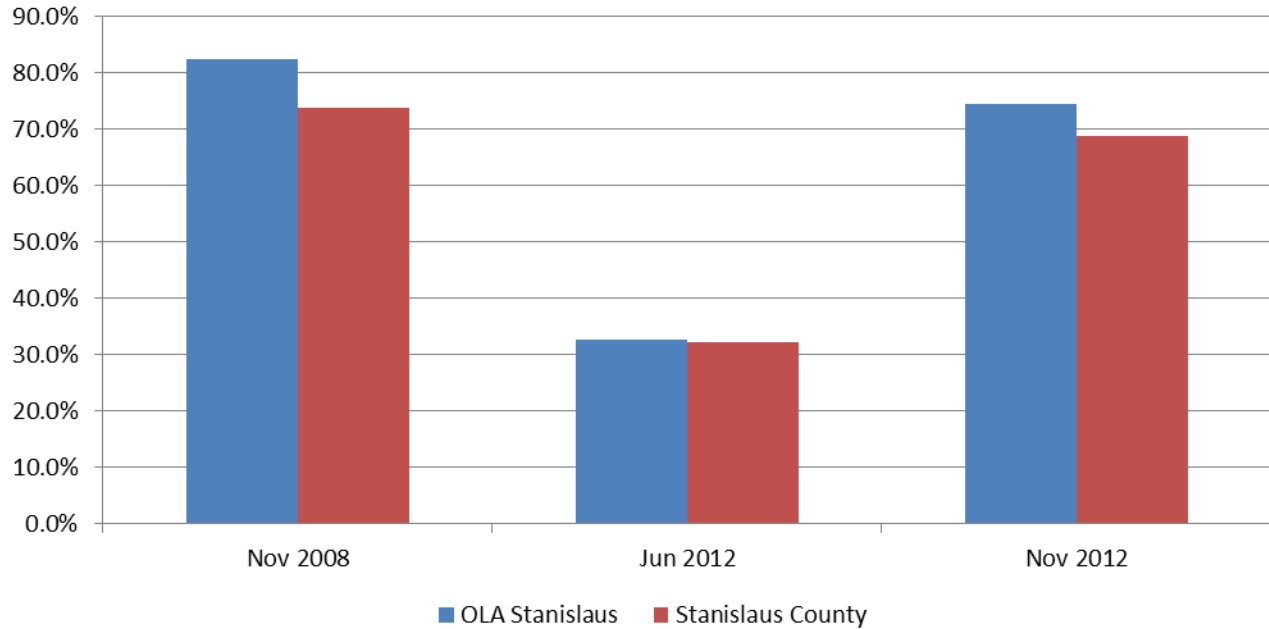
Voter turnout in the November Presidential election for Our Lady of the Assumption Stanislaus residents was higher than Stanislaus County for voters under 60 years of age but lower for older voters. Merced County residents likewise had a higher voter turnout than Merced County for voters 18 – 30 and 40 – 60, but had a lower turnout for 30-40 year olds and voters over 60.

More Our Lady of the Assumption voters over age 60 are registered as Democrats in in Merced and Stanislaus Counties while more voters under age 60 are registered Republicans. This is consistent with Stanislaus and Merced Counties. Very few Our Lady of the Assumption voters who reside in Stanislaus County are registered as Independent, while a significant number of Merced residents are registered as Independent. A high number of voters age 18-30 in Merced County are registered as Independent. The following graphs summarize voter turnout for Our Lady of the Assumption and Stanislaus and Merced Counties.

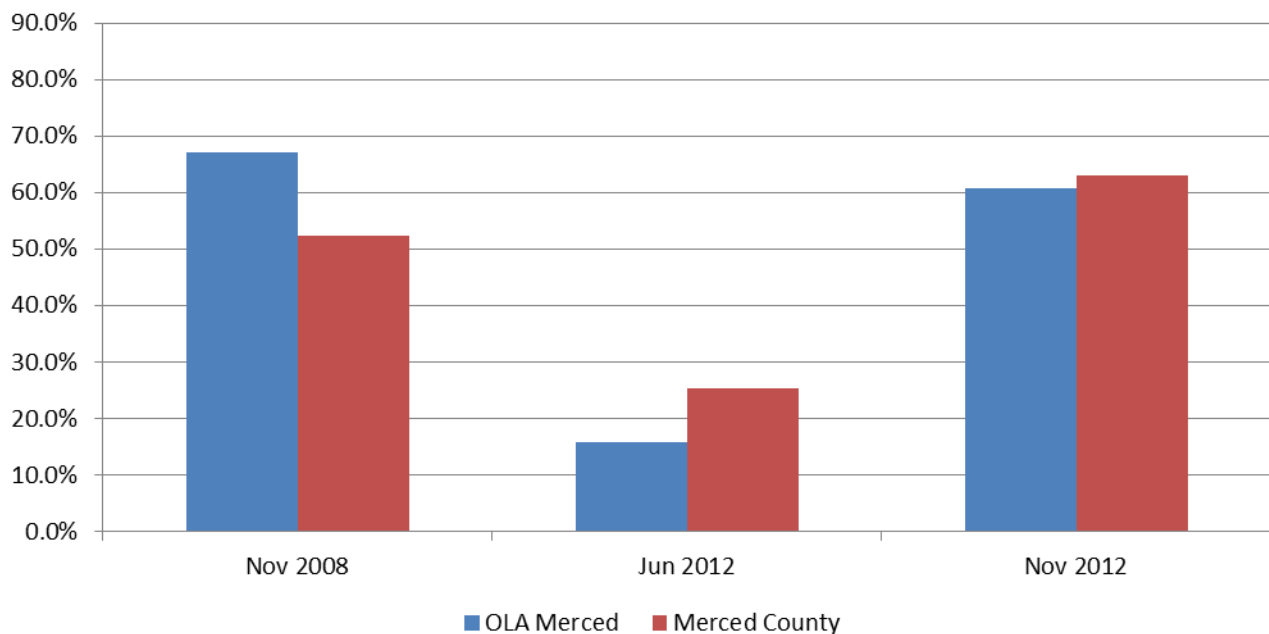
Results Graphs



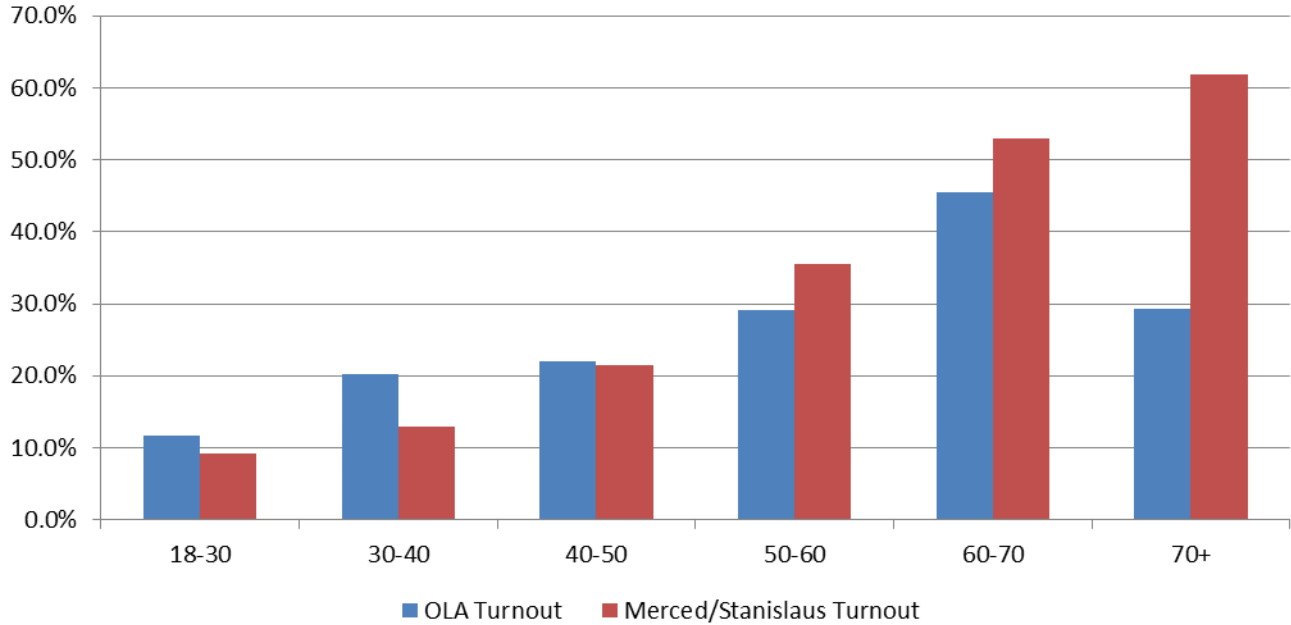
Voter Turnout Our Lady of the Assumption Stanislaus Residents vs. Stanislaus County



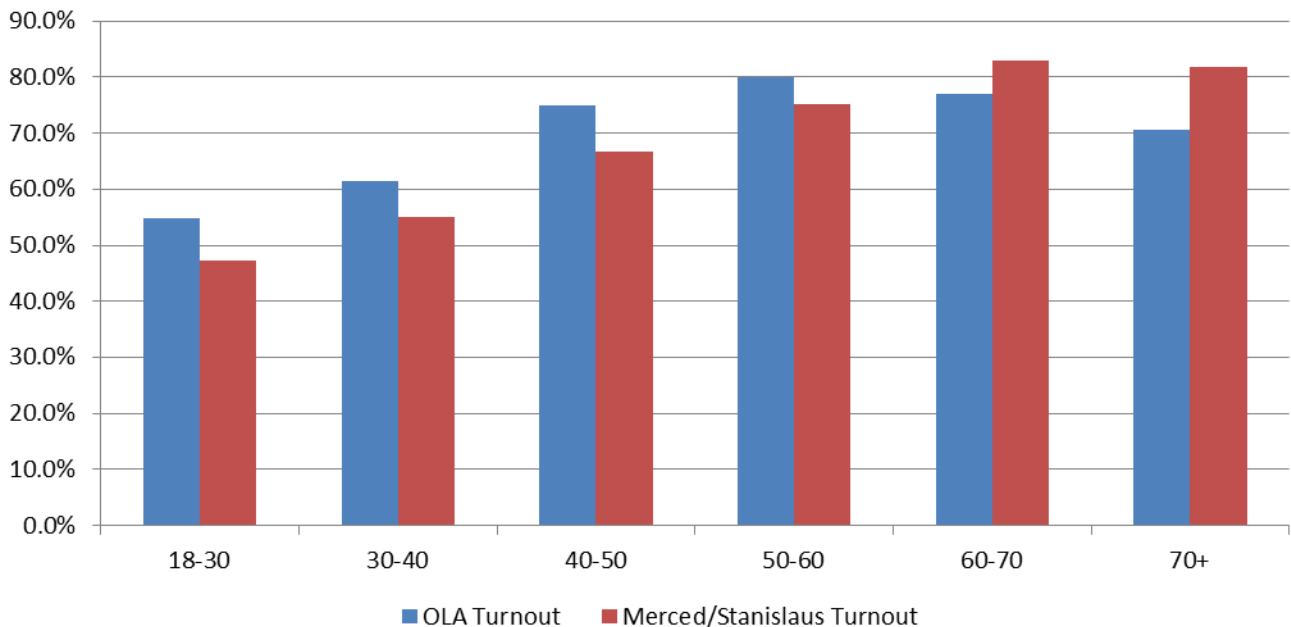
Voter Turnout Our Lady of the Assumption Merced Residents vs. Merced County



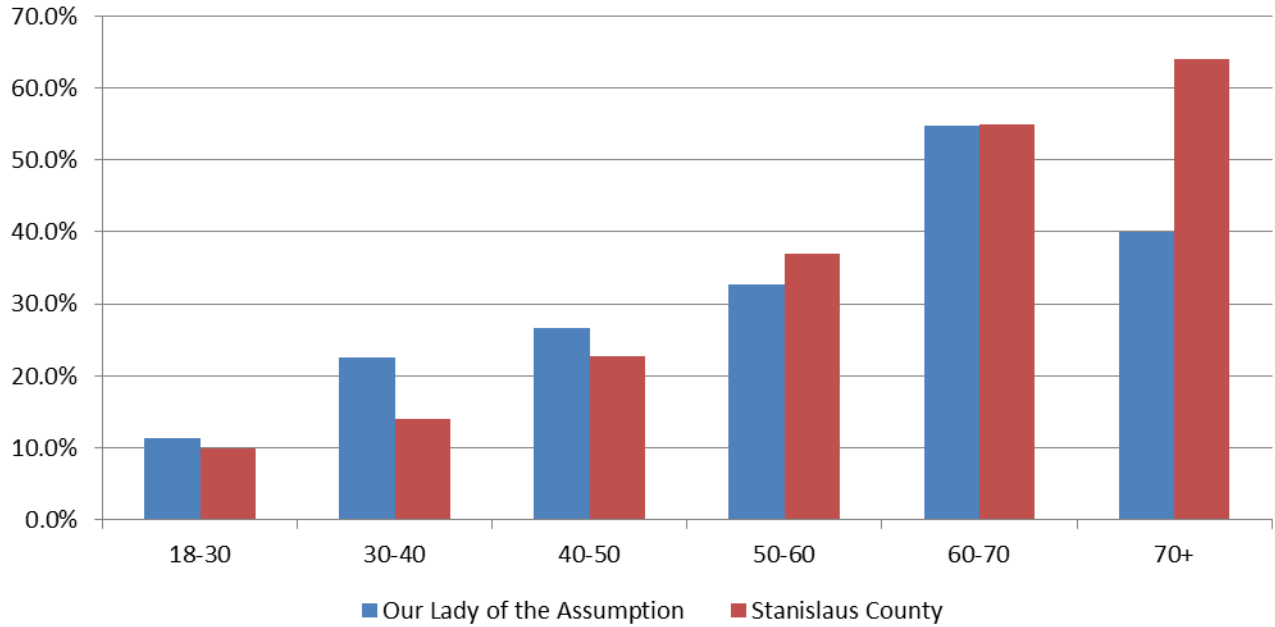
Voter Turnout by Age - June 2012 OLA Merced + Stanislaus Residents vs. Merced + Stanislaus Counties



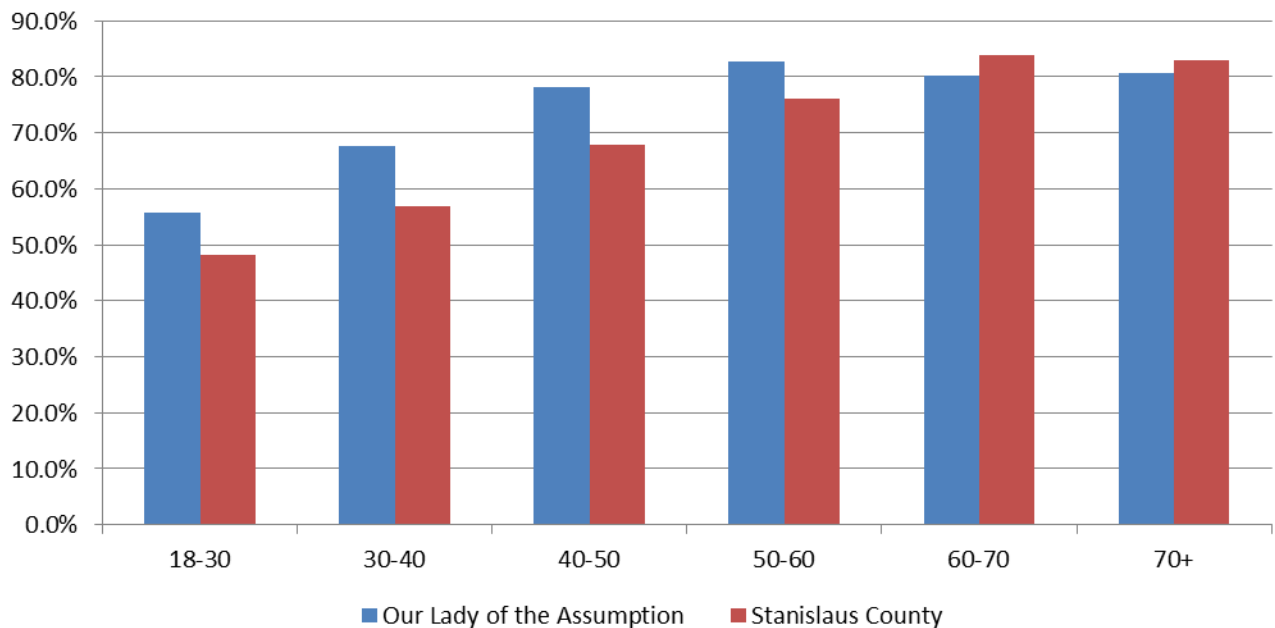
Voter Turnout by Age - November 2012 OLA Merced + Stanislaus Residents vs. Merced + Stanislaus Counties



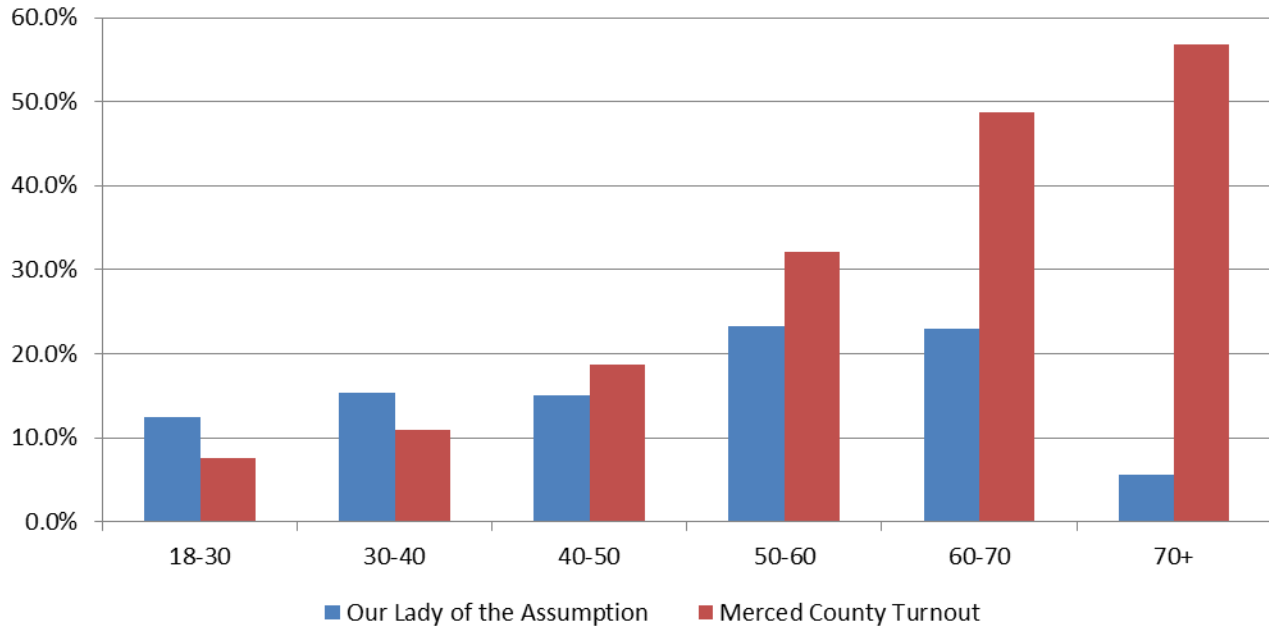
Turnout by Age - June 2012 Our Lady of the Assumption Stanislaus Residents vs. Stanislaus County



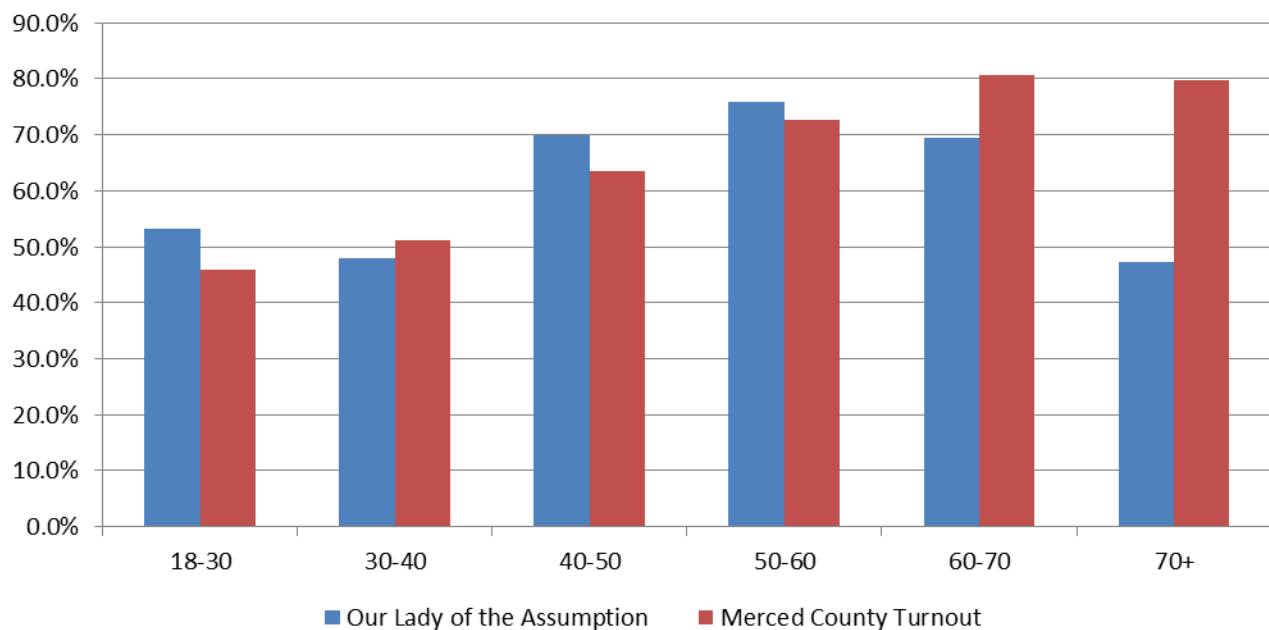
Turnout by Age - November 2012 Our Lady of the Assumption Stanislaus Residents vs. Stanislaus County



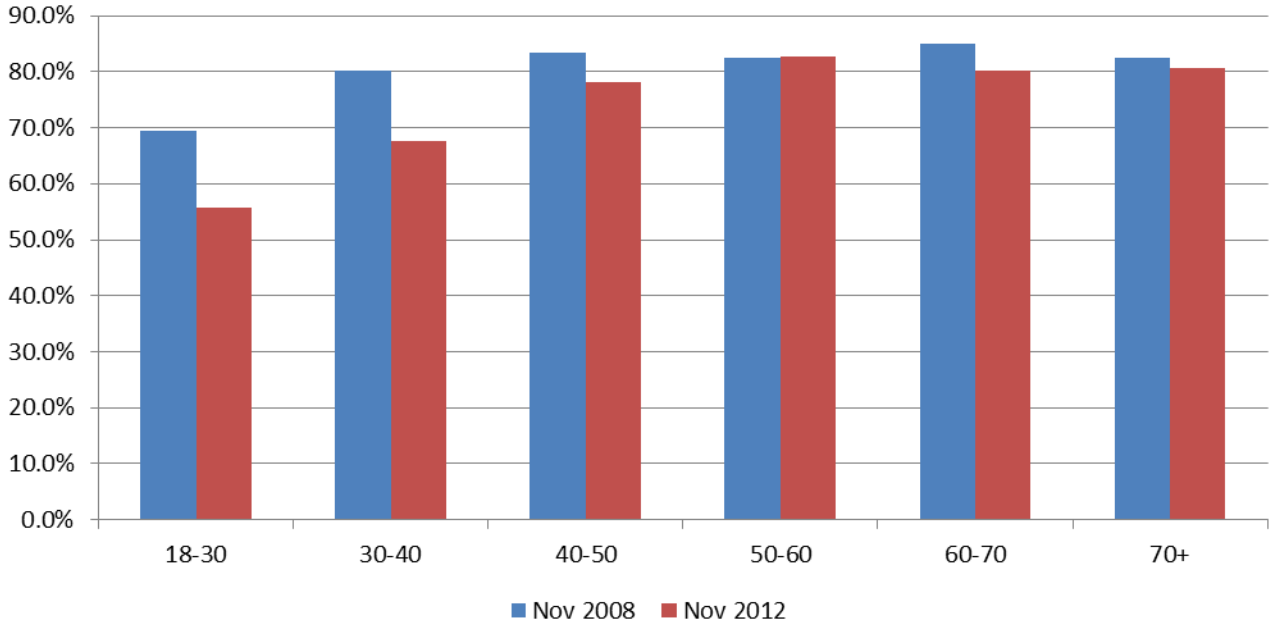
Turnout by Age - June 2012 Our Lady of the Assumption Merced Residents vs. Merced County



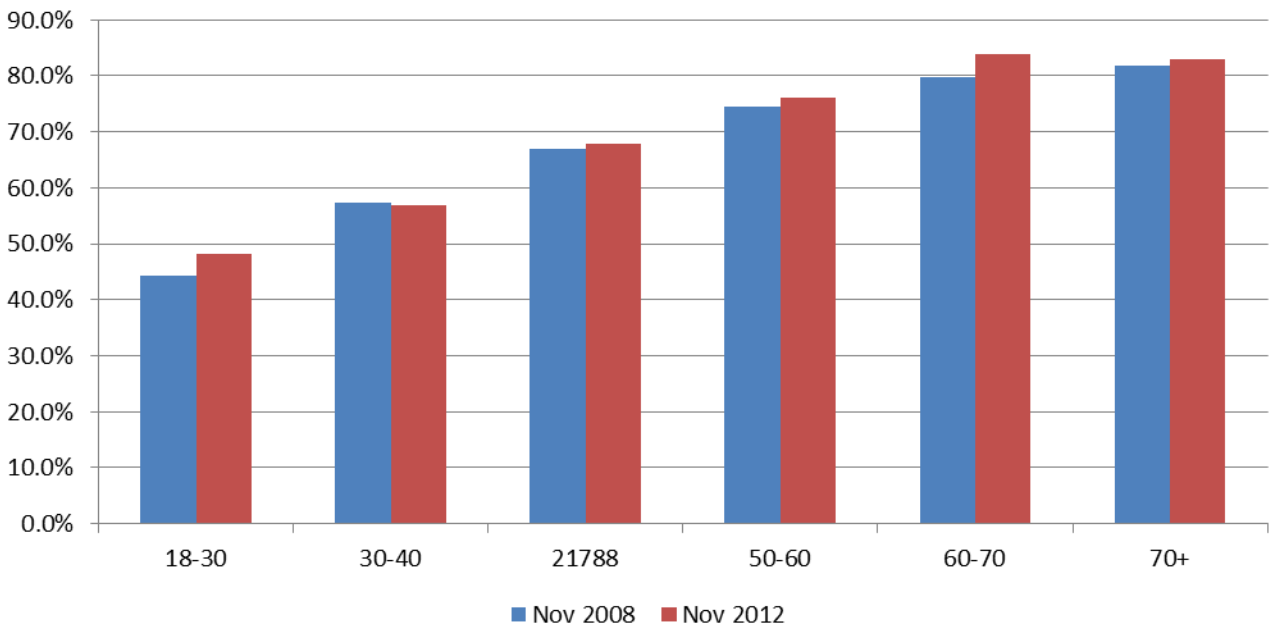
Turnout by Age - November 2012 Our Lady of the Assumption Merced Residents vs. Merced County



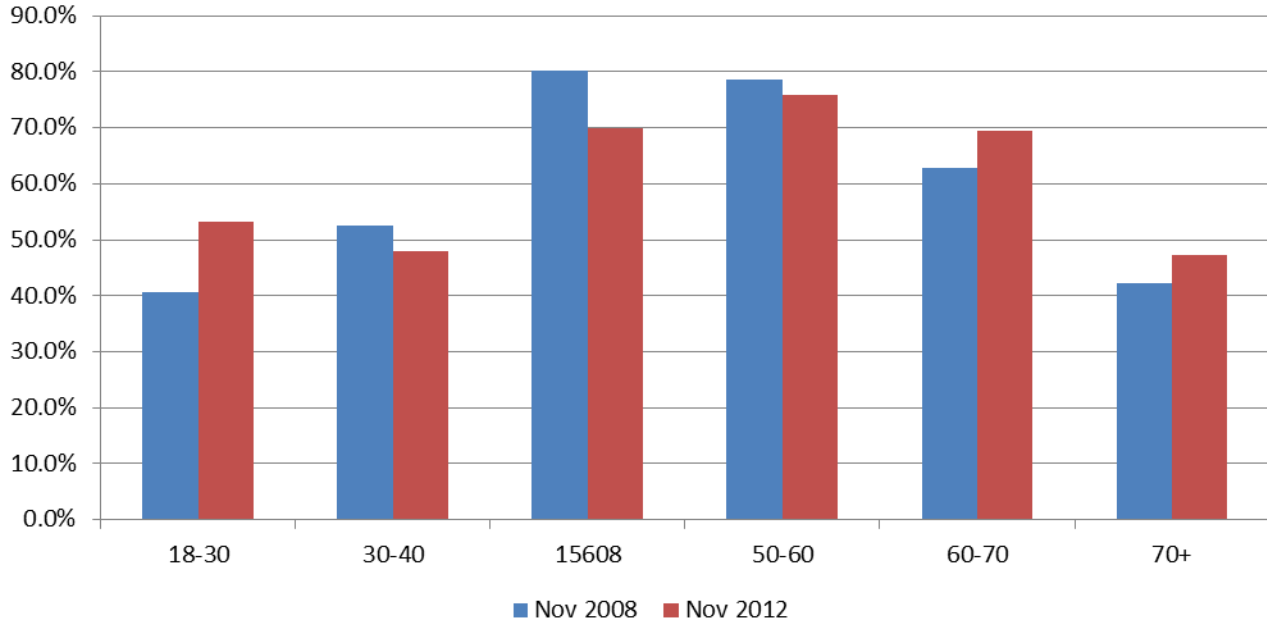
Voter Turnout by Age 2008 vs. 2012 Presidential Elections Our Lady of the Assumption Stanislaus Residents



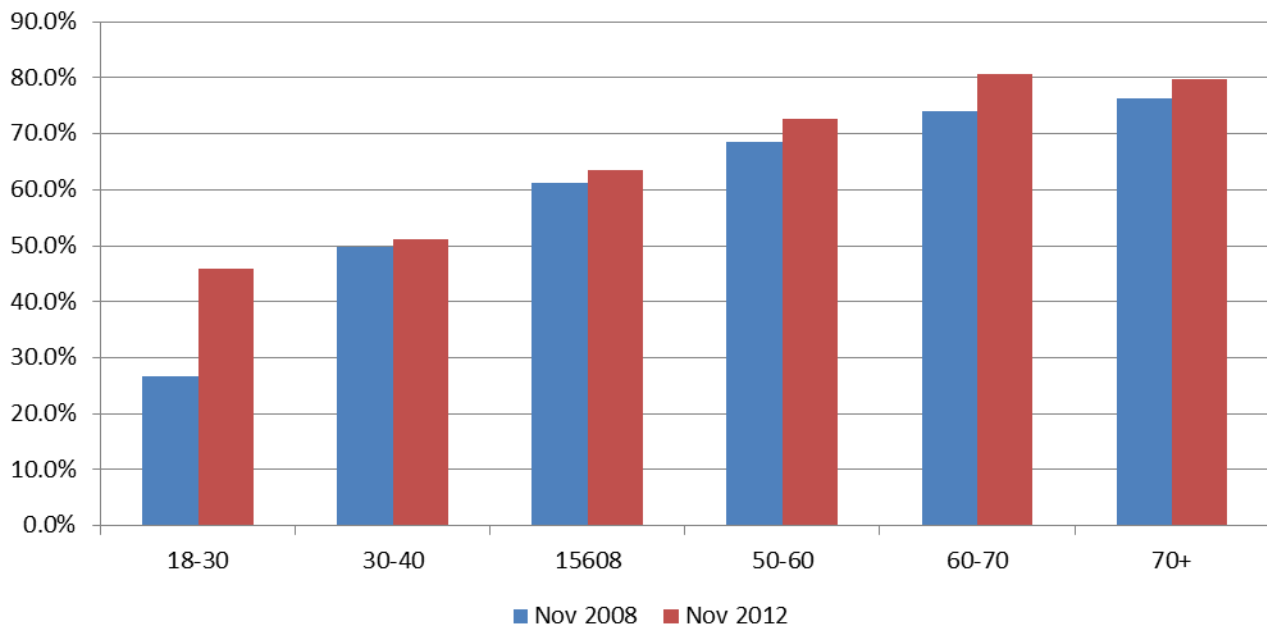
Voter Turnout by Age 2008 vs. 2012 Presidential Elections Stanislaus County



Voter Turnout by Age 2008 vs. 2012 Presidential Elections Our Lady of the Assumption Merced Residents



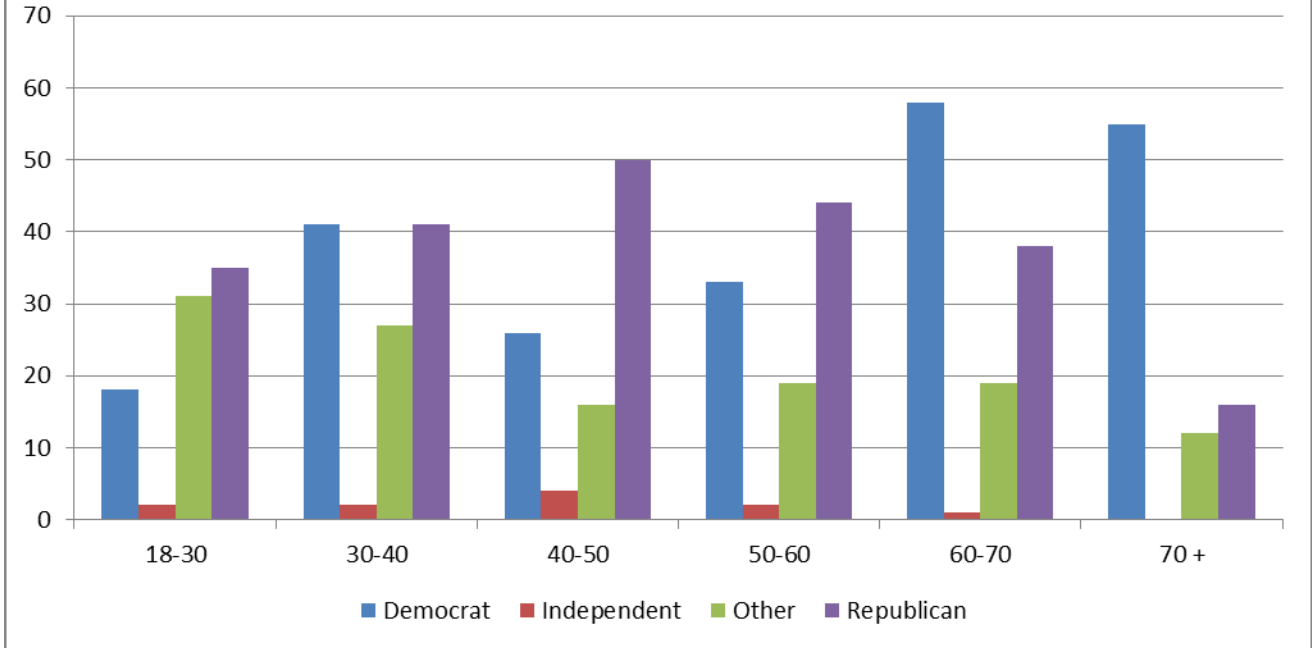
Voter Turnout by Age 2008 vs. 2012 Presidential Elections Merced County



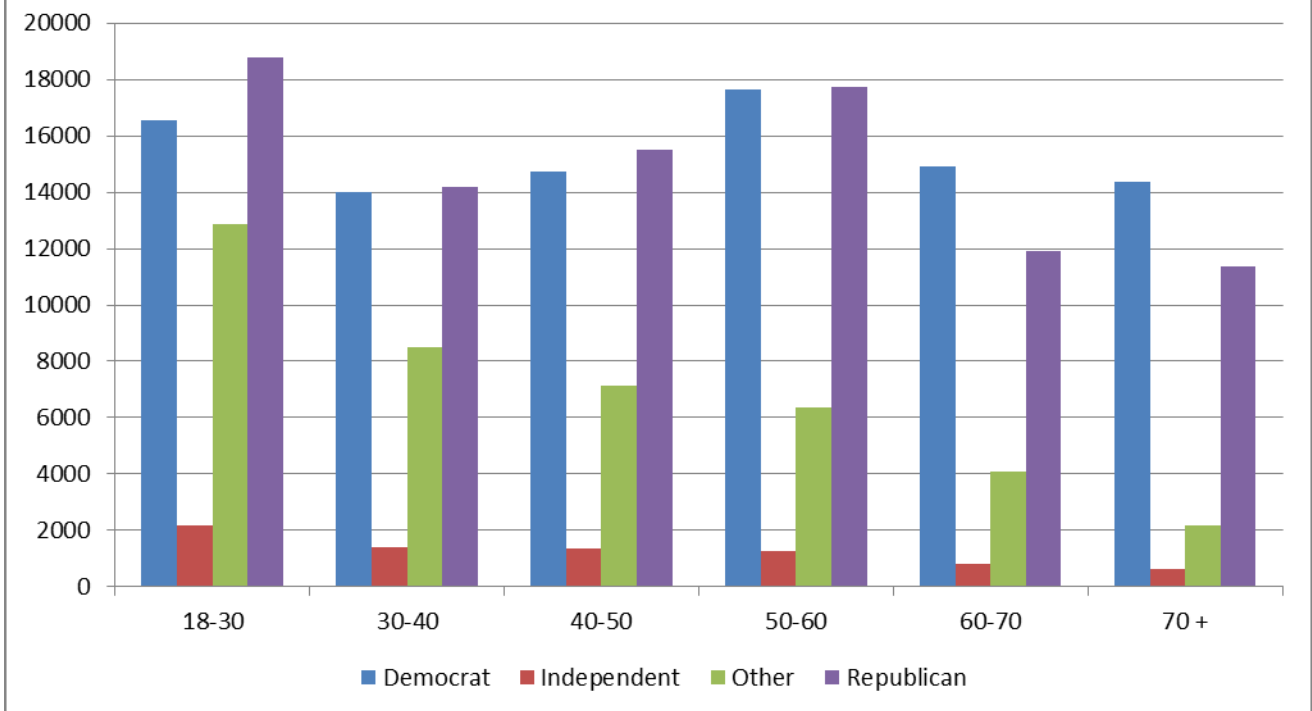
Appendices

Registered Voters by Age and Party	11
Voter Turnout by Party (Merced)	13
Voter Turnout by Gender and Party (Stanislaus)	14
Voter Turnout by Age and Voting Method	15
Registered vs. Actual Voters	18
Voted in both 2008 and 2012 Presidential Elections	19
Voted in all last three elections	19

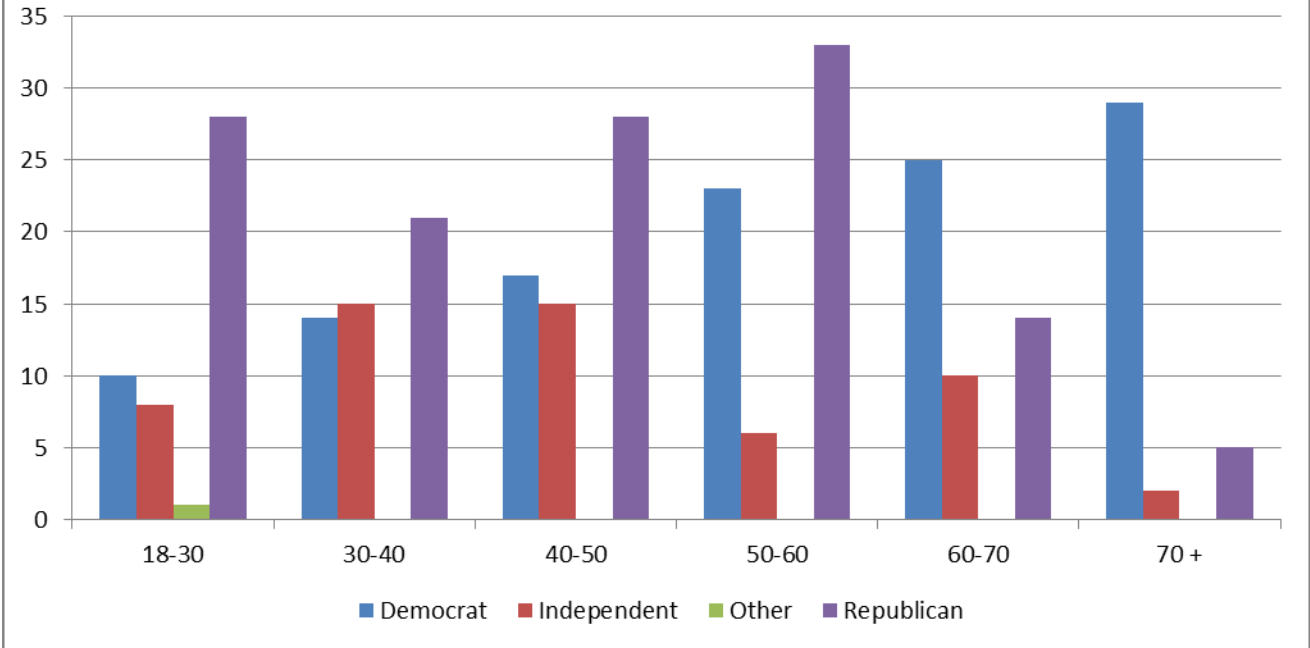
Registered Voters by Age and Party Our Lady of the Assumption Stanislaus Residents



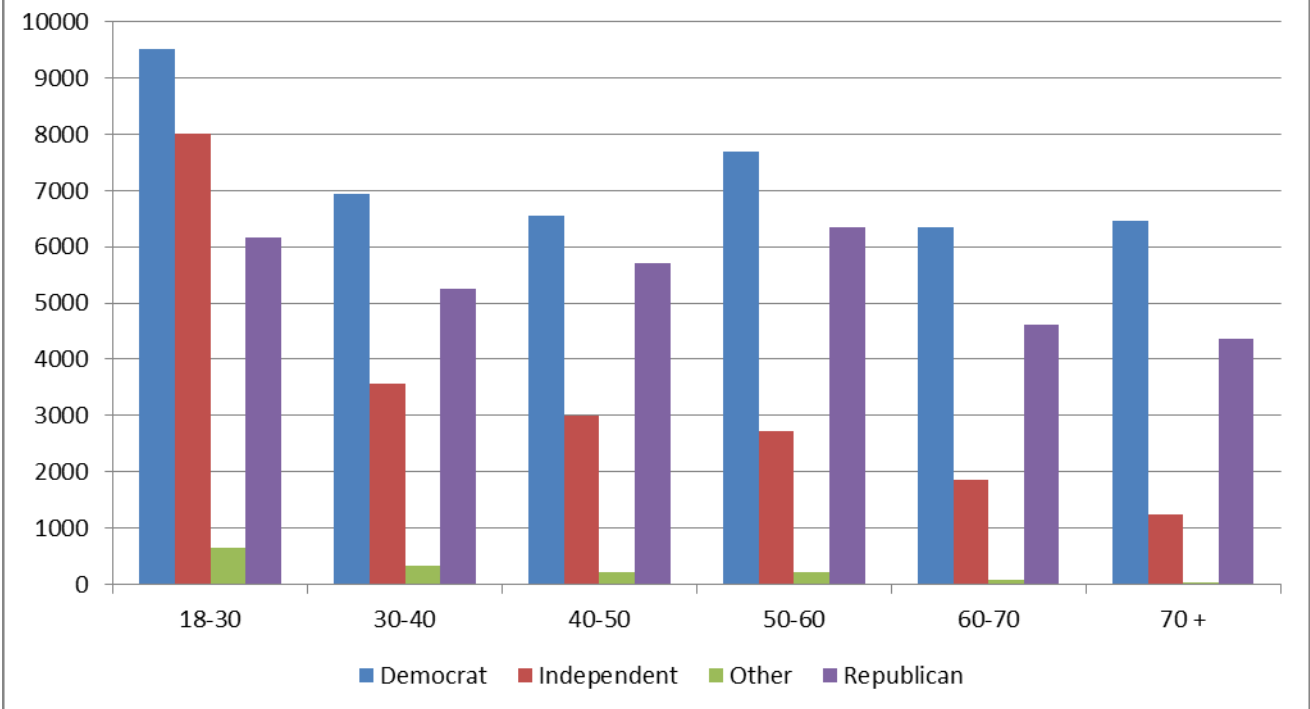
Registered Voters by Age and Party Stanislaus County



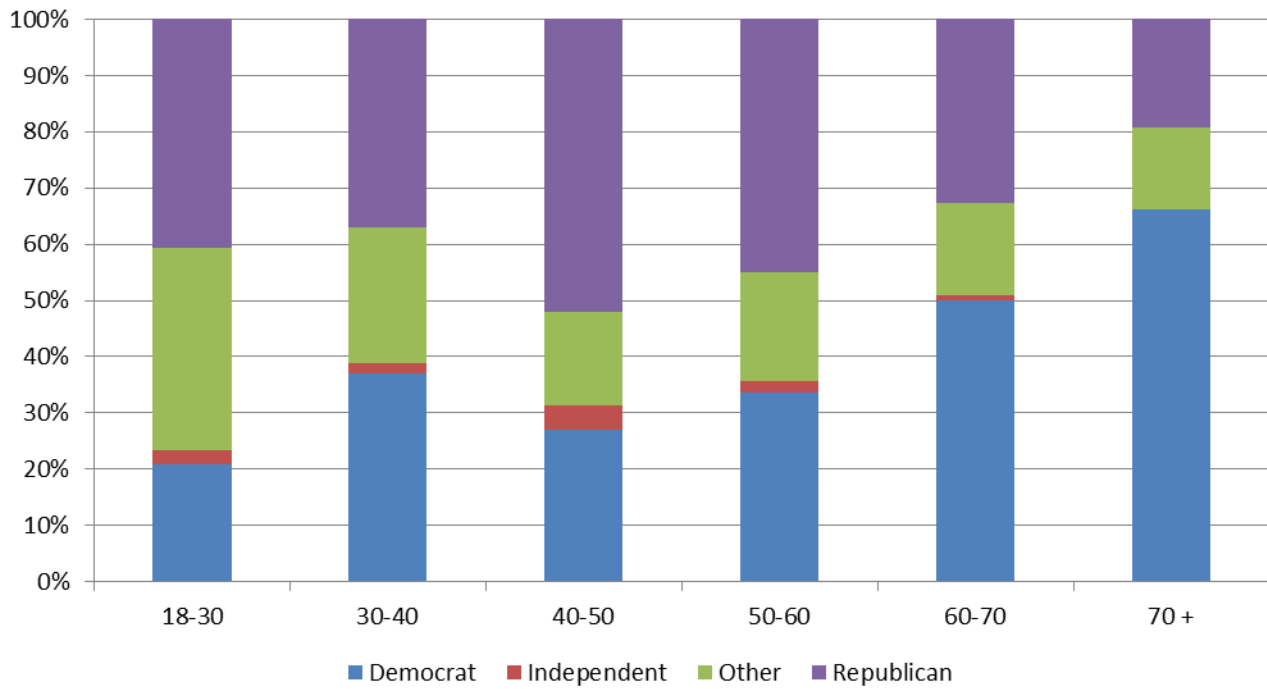
Registered Voters by Age and Party Our Lady of the Assumption Merced Residents



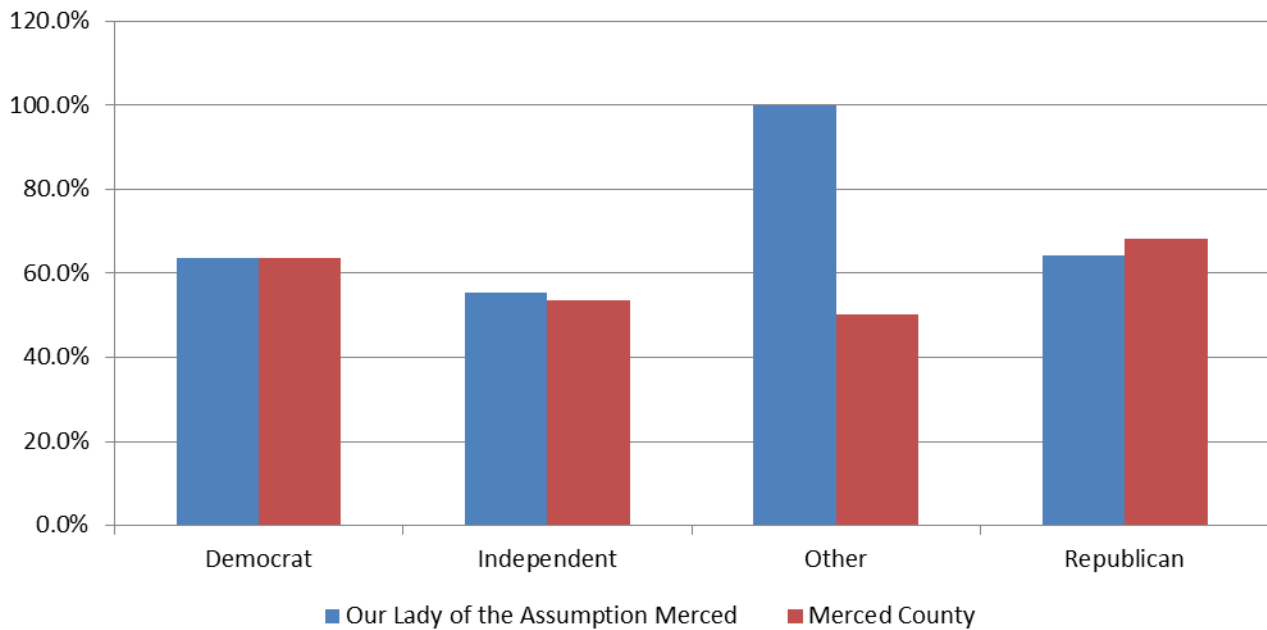
Registered Voters by Age and Party Merced County



Percentage of Registered Voters by Age and Party Our Lady of the Assumption Stanislaus Residents

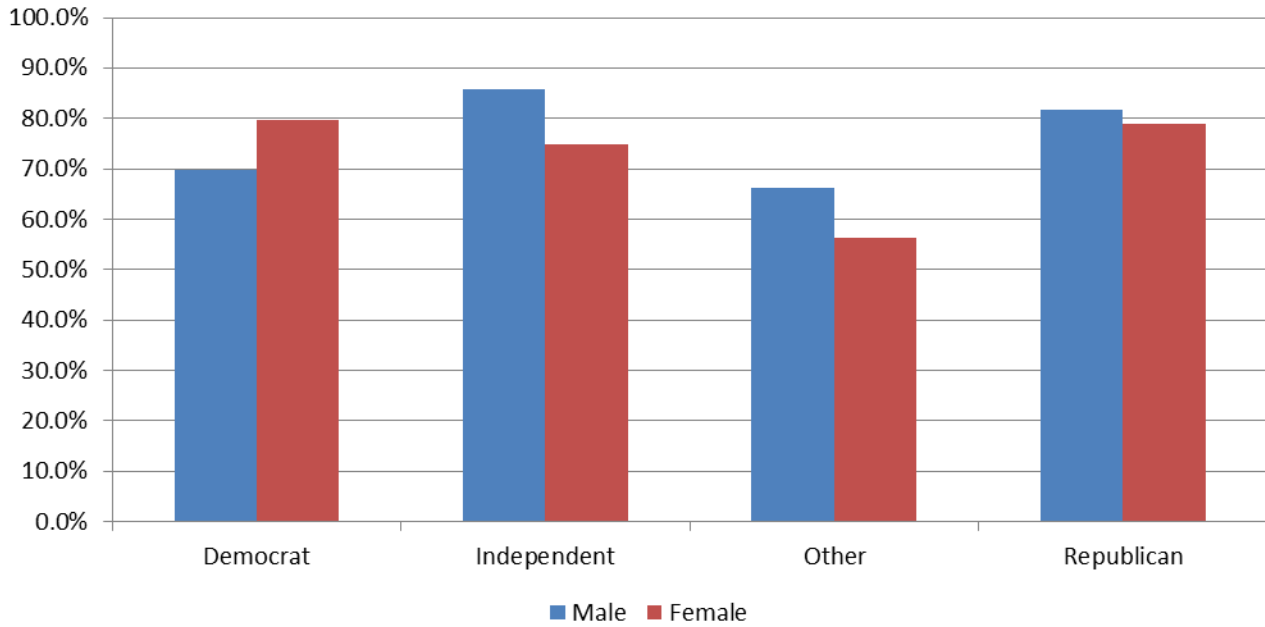


Voter Turnout - November 2012 Election Our Lady of the Assumption Merced Residents vs. Merced County by Party

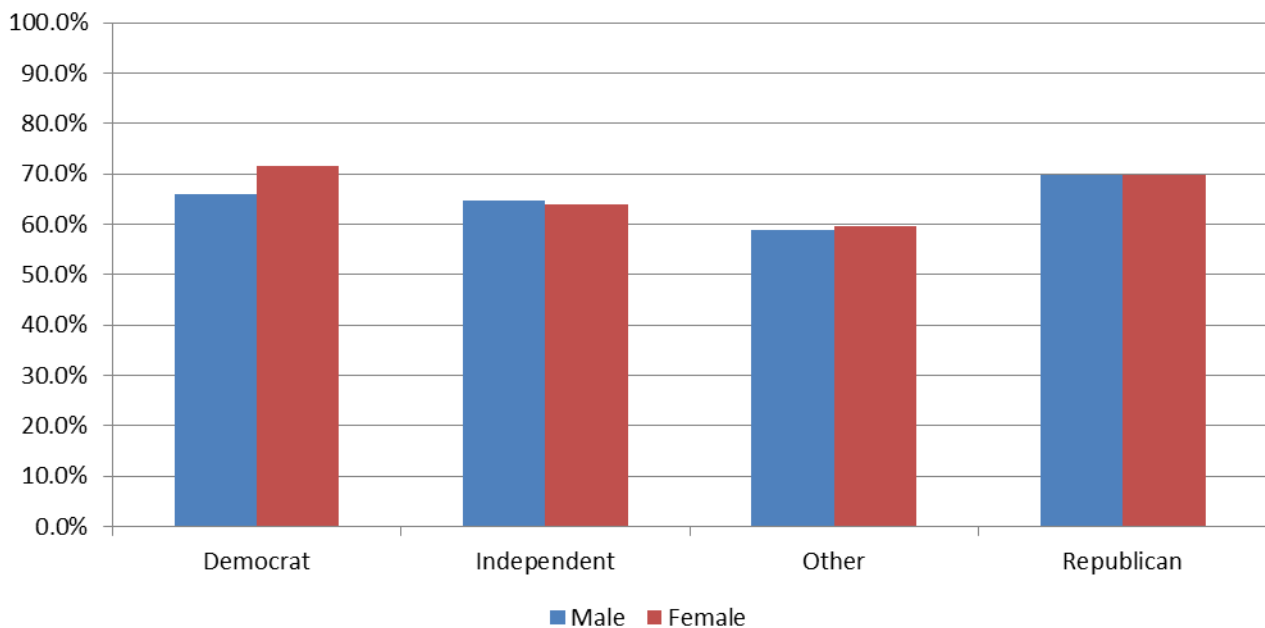


Merced county does not collect or maintain gender information so it could not be used this reports.

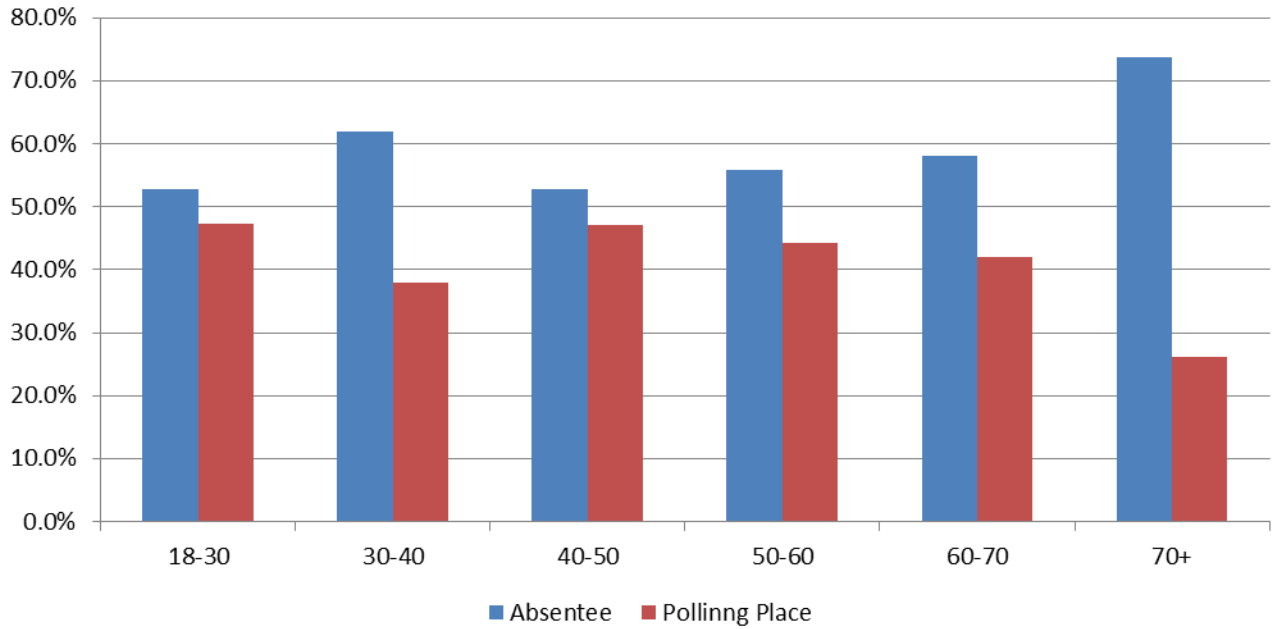
Voter Turnout - November 2012 Election Our Lady of the Assumption Stanislaus Residents by Gender and Party



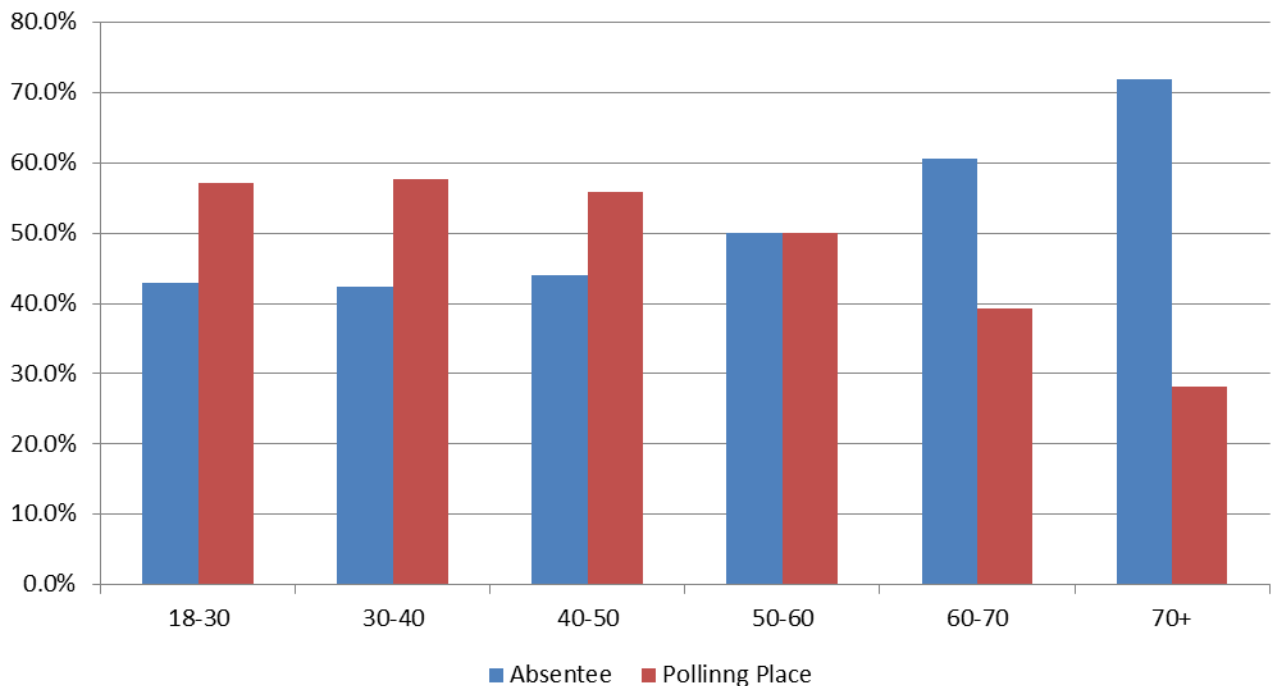
Voter Turnout - November 2012 Election Stanislaus County by Gender and Party



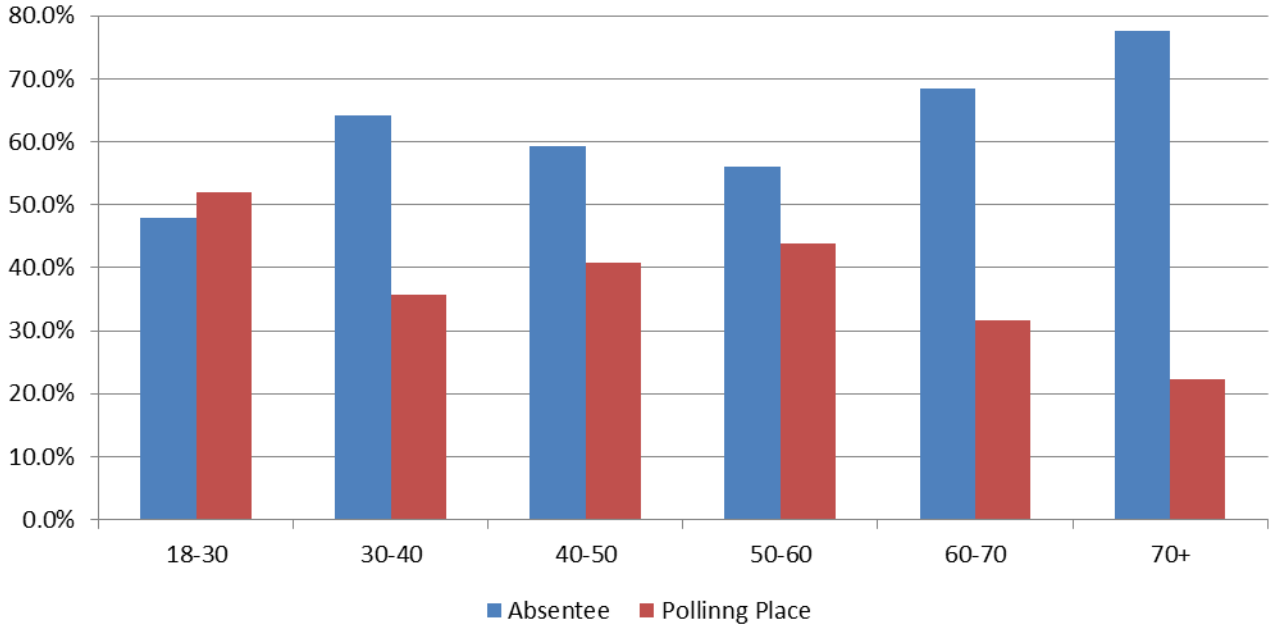
Voter Turnout By Age and Voting Method Our Lady of the Assumption Stanislaus+Merced Residents - November 2012



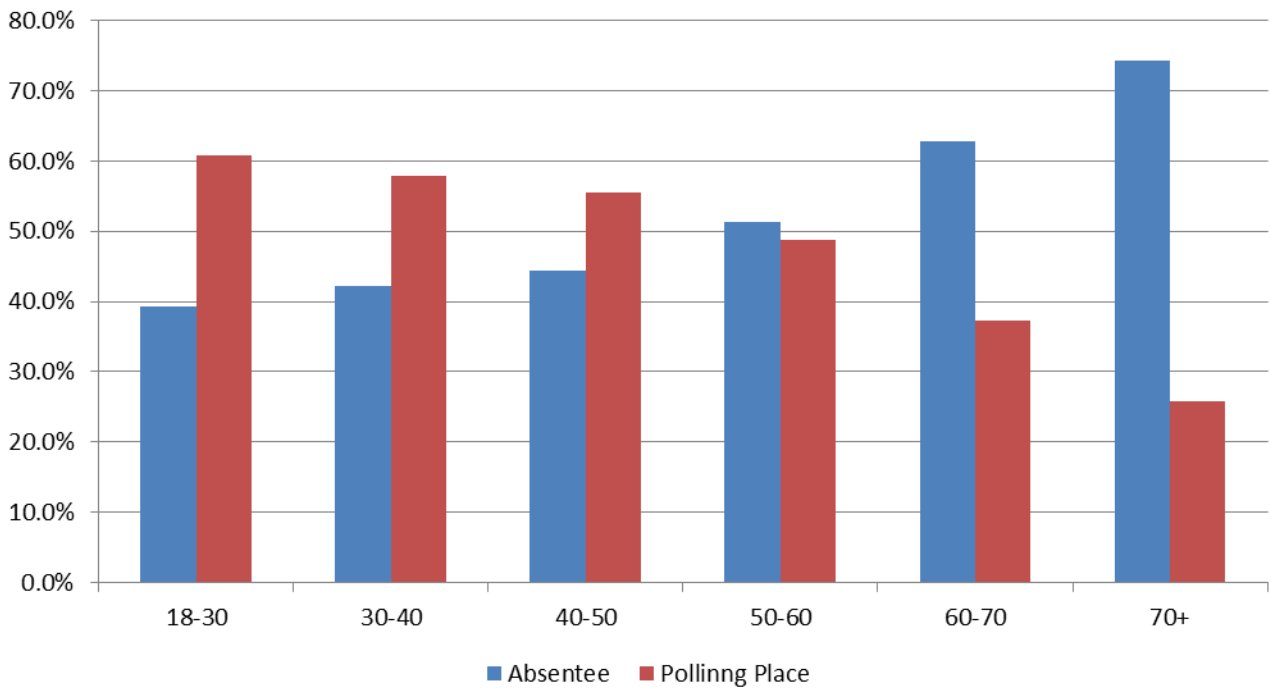
Voter Turnout By Age and Voting Method Stanislaus+Merced Counties - November 2012



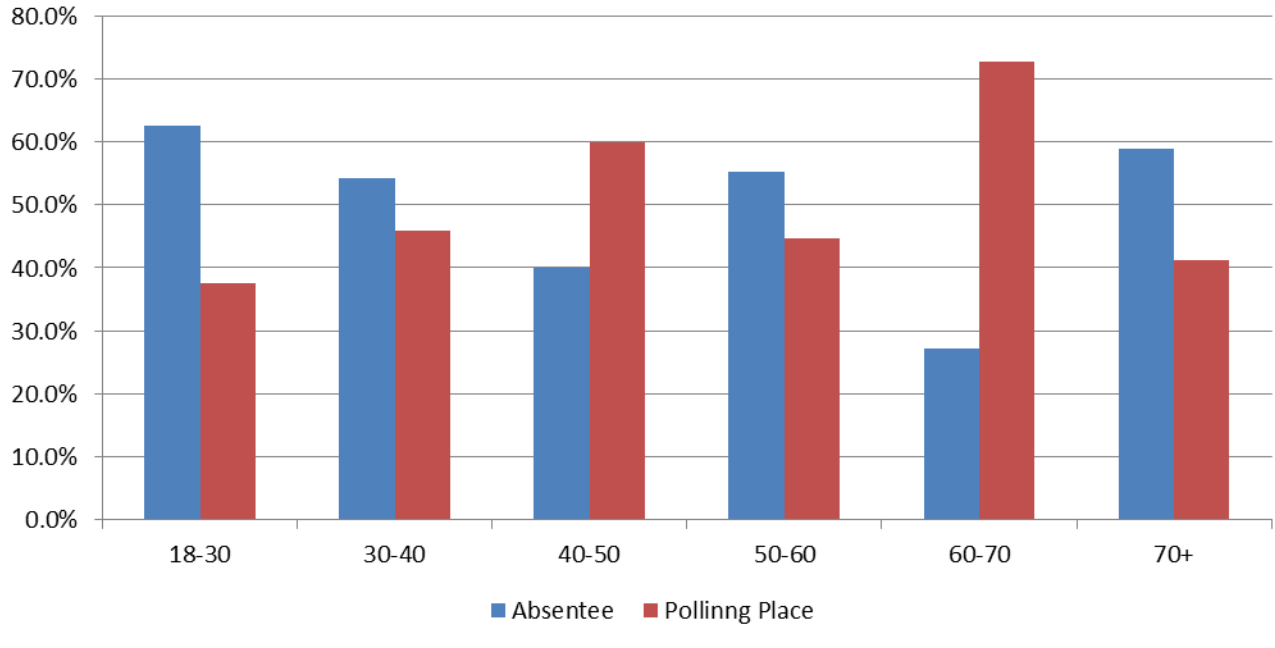
Voter Turnout By Age and Voting Method Our Lady of the Assumption Stanislaus Residents - November 2012



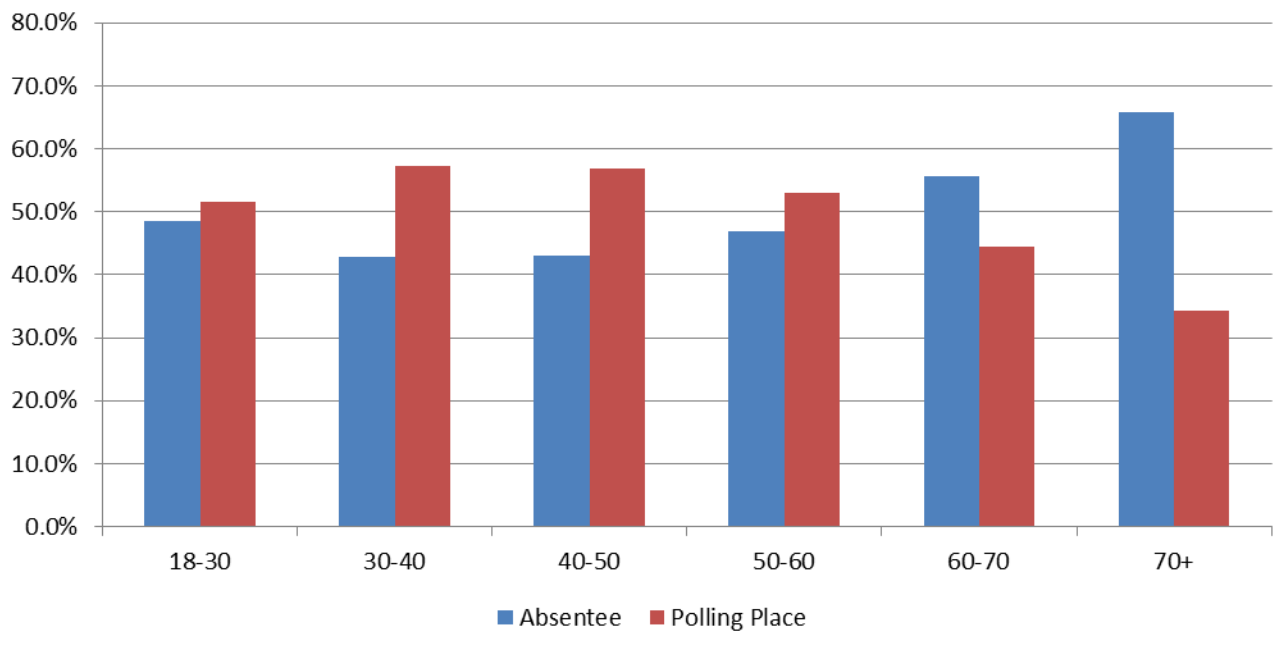
Voter Turnout By Age and Voting Method Stanislaus County - November 2012



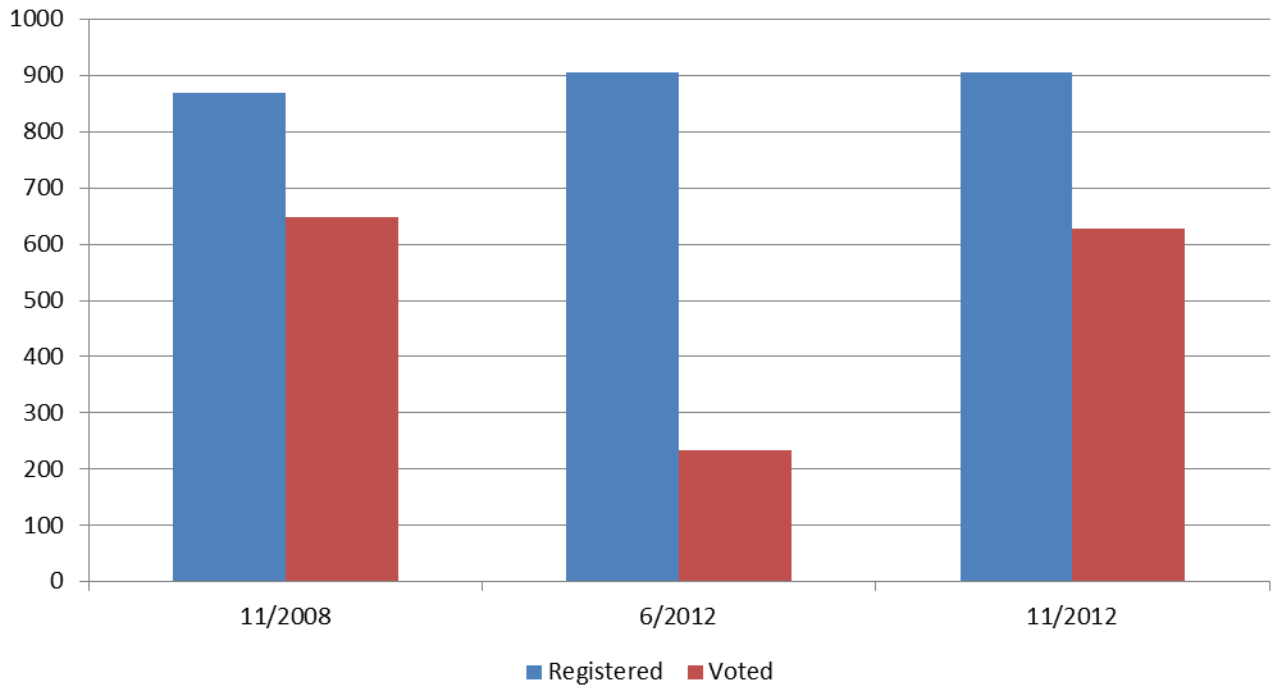
Voter Turnout By Age and Voting Method Our Lady of the Assumption Merced Residents - November 2012



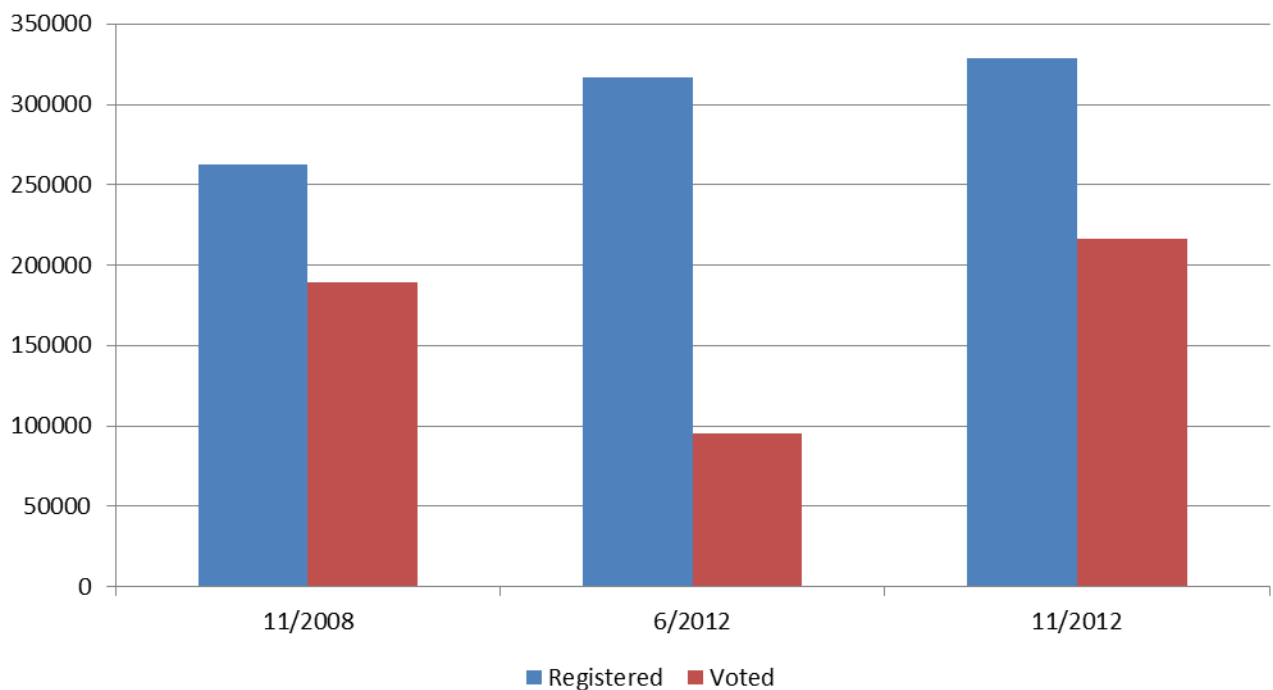
Voter Turnout By Age and Voting Method Merced County - November 2012



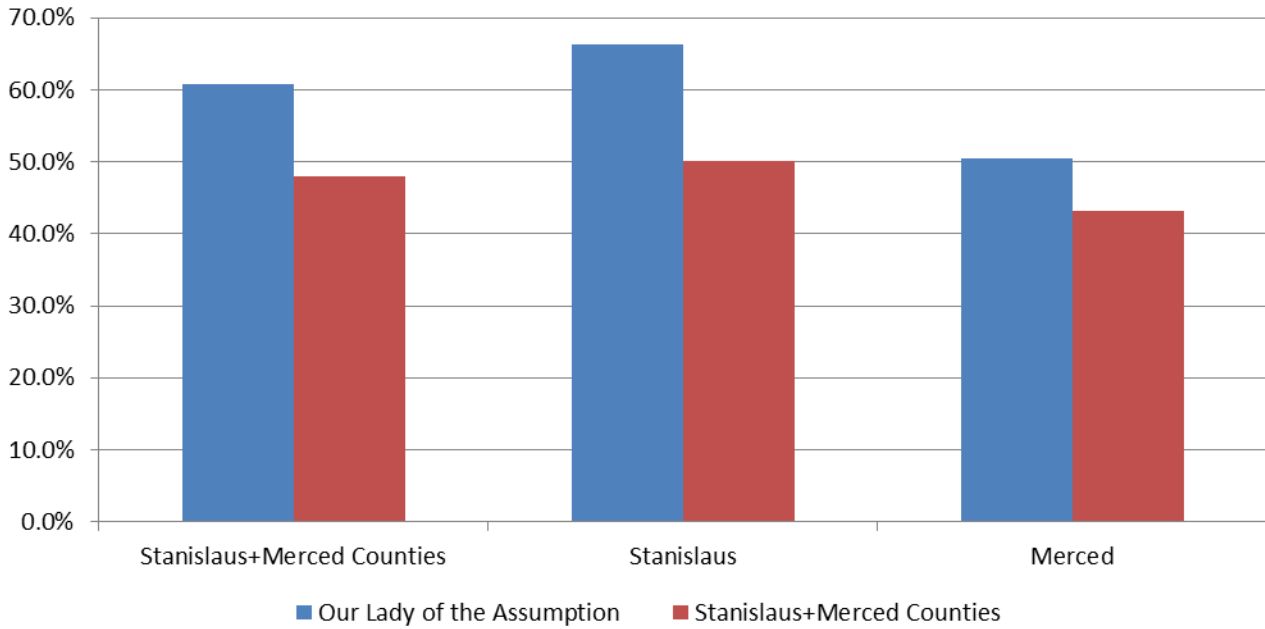
Registered Voters vs. Actual Voters Our Lady of the Assumption



Registered Voters vs. Actual Voters Stanislaus + Merced Counties



Voter Turnout Voted in Both 2008 and 2012 Presidential Elections Our Lady of the Assumption vs. Stanislaus/Merced



Voter Turnout Voted in Last 3 Elections Our Lady of the Assumption vs. Stanislaus/Merced

